

Earthing components and accessories

Earthing Protection

Copper Alloy Clamps

Made from copper alloy to provide a strong resistance to corrosion.

Rod to Tape Clamp

Part No.	Size (mm)	Max Conductor
ERTC16	16 x (5/8")	26 x 12



Rod to Cable Clamp

Part No.	Size (mm)	Max Conductor
ERCC95	9.5 x (3/8")	35mm ²
ERCC16	16 x (5/8")	50mm ²



Rod To Cable Lug Clamp

Part No.	Size (mm)	Max Conductor
ERCLC95	9.5 x (3/8")	35mm ²
ERCLC16	16 x (5/8")	50mm ²



DC Tape Clamp

Used for supporting bare copper tape
Material: Brass



Part No.	Conductor Size (mm)
ETC253	25 x 3
ETC506	50 x 6

Square Tape Clamp

Used for supporting bare copper tape
Material: Brass



Part No.	Conductor Size (mm)
ESTC253	25 x 3
ESTC506	50 x 6

Oblong Test Clamp

Used for supporting bare copper tape
Material: Brass



Part No.	Conductor Size (mm)
EOTC253	25 x 3
EOTC506	50 x 6

DC Tape Clamp - Aluminium

Used for supporting bare aluminium tape
Material: Aluminium



Part No.	Conductor Size (mm)
ETC253-ALU	25 x 3

Plastic DC Clamp - High Impact PVC

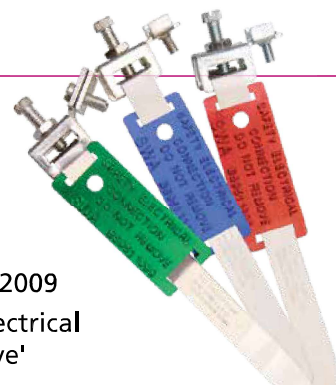
Used for supporting bare copper tape
Material: PVC

Part No.	Conductor Size (mm)
EPTC253-GREY	25 x 3
EPTC253-GREEN	25 x 3
EPTC253-BROWN	25 x 3



Earth Clamps

- Safety clamps
- Manufactured in brass for indoor use or phosphor bronze for outdoor use
- Manufactured to BS 951:2009
- Embossed tags 'safety electrical connection do not remove'



Part No.	Tag Colour	Description	Max Earth Conductor	Box Qty
SEC14	Red	Indoor use - dry, non corrosive to suit pipe dia. 12-32mm	1 x 10mm ²	25
SEC14/3	Red	Indoor use - dry, non corrosive to suit pipe dia. 50-75mm	1 x 10mm ²	20
SEC15	Blue	For outdoor corrosive, humid conditions to suit pipe dia. 12-32mm	1 x 10mm ²	25
SEC15/3	Blue	For outdoor corrosive, humid conditions to suit pipe dia. 50-75mm	1 x 10mm ²	20
SEC16	Green	For outdoor corrosive, humid conditions to suit pipe dia. 12-32mm	2 x 16mm ²	25
SEC16/3	Green	For outdoor corrosive, humid conditions to suit pipe dia. 50-75mm	2 x 16mm ²	20